

For Sale or Build to Suit

Magic View Parcel

Meridian ID



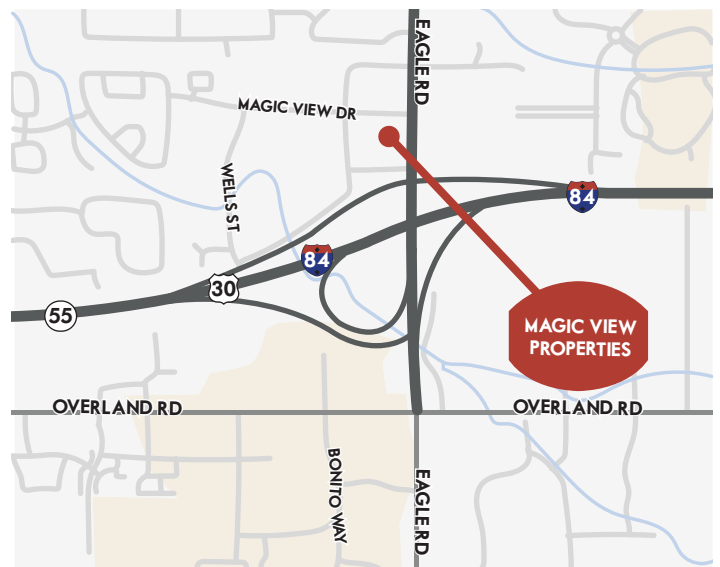
This parcel is located in the vicinity of Eagle Road and Interstate 84 in East Meridian, across from St. Luke's Regional Medical Center, and offers proximity to the growing medical community anchored by this full-service community hospital. This site also offers an excellent location for any business seeking the benefits of immediate access to Interstate 84, and convenient access to and from the center of the Treasure Valley.

Magic View Parcel

available lot: 1.572 acres

utilities: All available

zoning: L-O



contact Wayne Slaughter, CCIM
208.331.0110 Office
208.695.5939 Mobile
wayne@retailwest.com

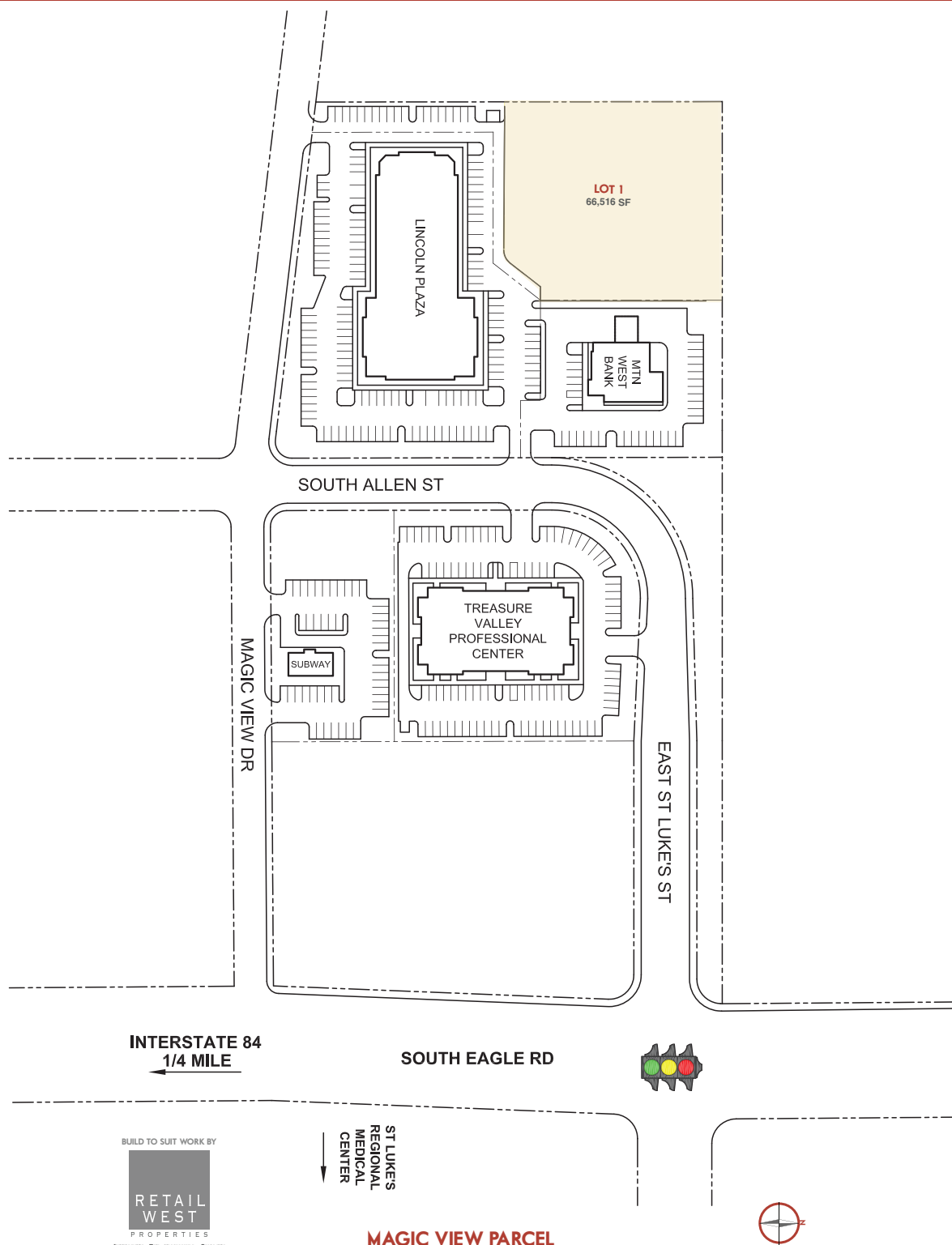
199 North Capitol Blvd., Suite 300
Boise, ID 83702
www.retailwest.com



For Sale or Build to Suit

Magic View Parcel

Boise ID



MAGIC VIEW PARCEL

contact Wayne Slaughter, CCIM
208.331.0110 Office
208.695.5939 Mobile
wayne@retailwest.com

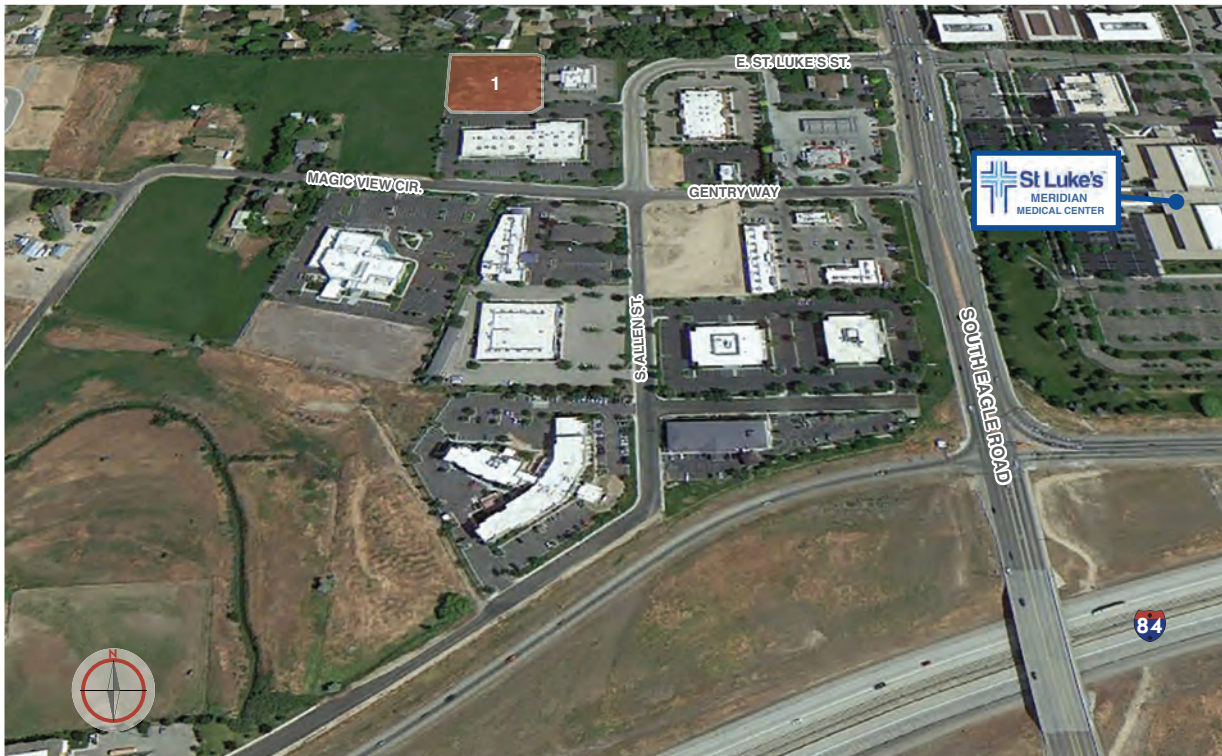
199 North Capitol Blvd., Suite 300
Boise, ID 83702
www.retailwest.com



For Sale or Build to Suit

Magic View Parcel

Boise ID



LOT NUMBER	SIZE (ACRES)	ZONING	UTILITIES
1	1.527	L-O	On-Site

contact Wayne Slaughter, CCIM
208.331.0110 Office
208.695.5939 Mobile
wayne@retailwest.com

199 North Capitol Blvd., Suite 300
Boise, ID 83702
www.retailwest.com

